



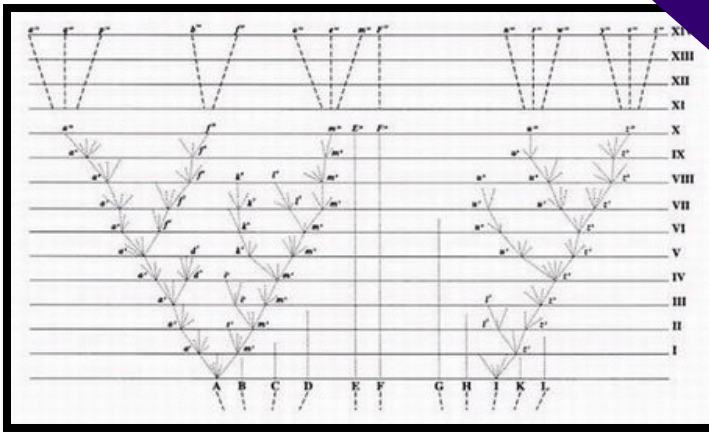
Biology Seminar

By: Dr. Elliott Sober

University of Wisconsin-Madison | Hans Reichenbach Professor & William F. Vilas Research Professor

<http://sober.philosophy.wisc.edu/>

Darwin's Phylogenetic Reasoning



Thursday, April 27, 2017 | 12:00pm
HCK 132 Refreshments at 11:45am

Darwin claimed that similarity is evidence for common ancestry, and that adaptive similarities provide weaker evidence than neutral or deleterious similarities. He also used phylogenetic trees to reason critically about adaptive hypotheses. In this talk I'll analyze his bits of reasoning and describe frameworks for evaluating their correctness.



Elliott Sober is Hans Reichenbach Professor of Philosophy and William F. Vilas Research Professor at University of Wisconsin-Madison. His research is in the philosophy of science, especially in the philosophy of evolutionary biology. In philosophy of biology, he has worked on the units of selection problem and on phylogenetic inference. In more general philosophy of science, he has worked on the conflict between Bayesianism and Frequentism, on the role of parsimony in scientific reasoning, on the mind/body problem, and on causality, explanation, and reductionism. He has received numerous awards and honors, including the Lakatos

Prize in 1991, the 2008 Prometheus Laureate, the 2014 Carl Gustav Hempel Award. He has been president of the Philosophy of Science Association, the American Philosophical Association (Central Division), and the International Union for History and Philosophy of Science (Division of Logic, Methodology, and Philosophy of Science).

